

BM#43 CHISELED SQUARE
S.E. COR. S. HDWL
STA. 396+43, 27' RT.
EL. 1134.97

BM#44 2" ALUM. CAP
END OF OVERPASS I-44
EL. 1144.60

BM#45 TOP OF STEM. H.A.R.N. MON.
"TWO" & ODOT MON. NO. C-16-1081
= BM#3 SWO 3748(1) I-44
STA. 70+72, 192' LT.
EL. 1140.31

SEC 18 T2N R11W

FT. SILL U.S. MILITARY RES.

LEGEND

- PROPOSED PAVEMENT
- PROPOSED RAISED MEDIAN
- DRAINAGE STRUCTURE

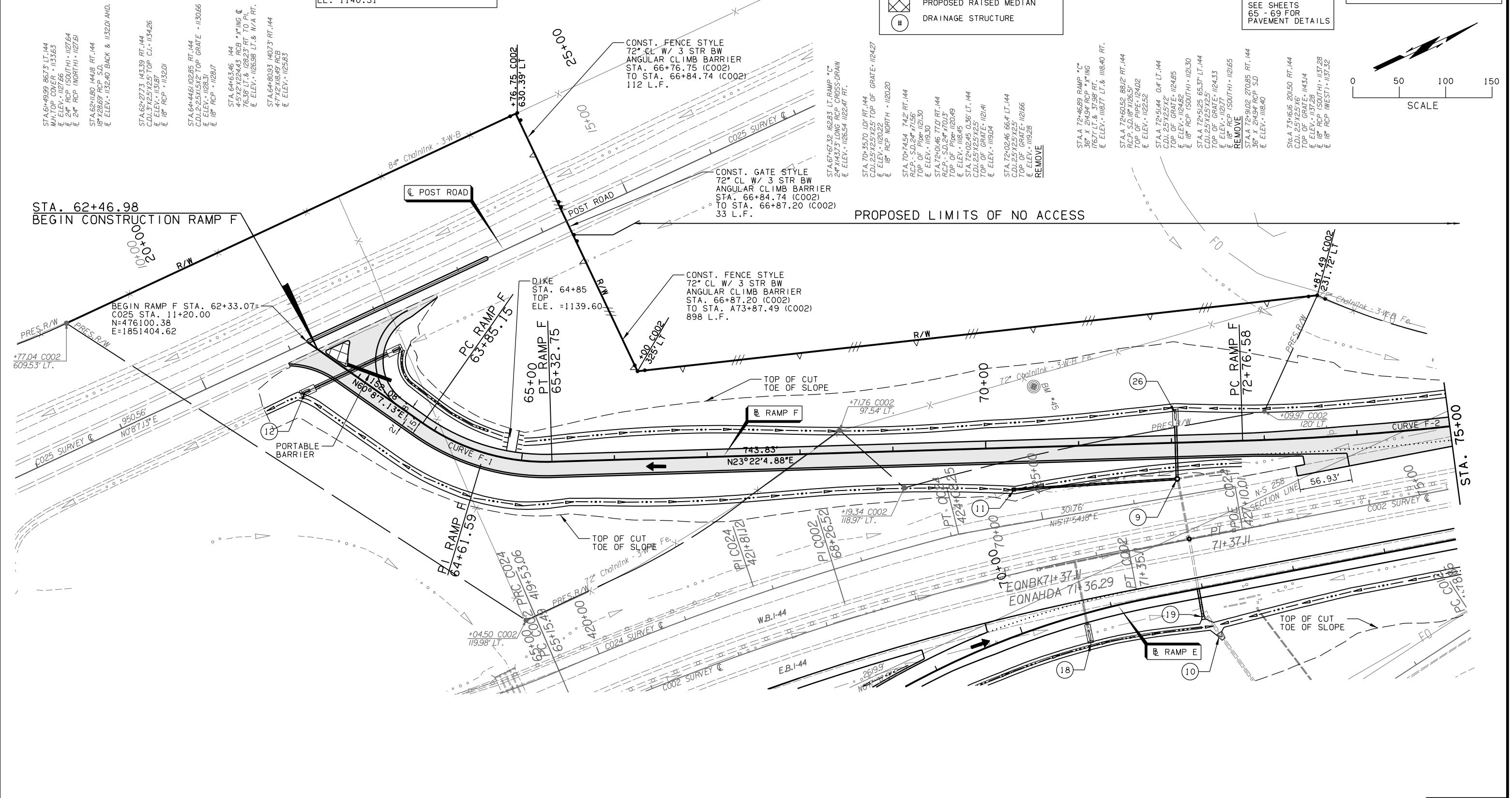
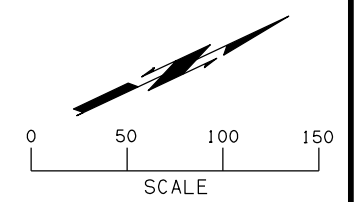
SEE SHEET
46 FOR RAMP F
PROFILE

SEE SHEETS
26 - 33 FOR
GEOMETRIC DATA

SEE SHEETS
65 - 69 FOR
PAVEMENT DETAILS

OKLAHOMA DEPARTMENT OF TRANSPORTATION					
FED. ROAD DIST. NO.	STATE	JOB PIECE NO.	FISCAL YEAR	SHEET NO.	TOTAL SHEETS
6	OKLA.	27050(04)	2017		

DESCRIPTION	REVISIONS	DATE



SEC 17 T2N R11W

RAMP F

DESIGN	AKS	6/12	1-44 & US-62 INTERCHANGE
DRAWN	BWH	6/12	
CHECKED	JES	5/16	
APPROVED			
SQUAD	GARVER	STATE JOB NO. 27050(04)	SHEET NO. 39

PLAN SHEET
(SHEET 6 OF 7)